



CONSULTATION REPORT

Appendix C Statement of Community Consultation and supporting information

Drax Bioenergy with Carbon Capture and Storage.

The Infrastructure Planning (Applications: Prescribed Forms and Procedure) Regulations, 2009 - Regulation 5(2)(q)

Document Reference Number: 5.1.3

Applicant: Drax Power Limited

PINS Reference: EN010120



REVISION: 01

DATE: May 2022

DOCUMENT OWNER: D. Kennedy

AUTHOR: D. Kennedy

APPROVER: B. Redpath

PUBLIC

C1 - SoCC correspondence

Subject: RE: BECCS at Drax – Early / informal review of the Statement of Community Consultation
Attachments: Drax BECCS SoCC v1.docx

Good morning all

Thanks Matthew for confirming that ERoY have no comments to make.

Please could SDC and NYCC advise if you have any comments on the enclosed?

Many thanks

Matt

Matthew Stocks *BA (Hons) MSc MRTPI*
Associate – Planning Consultancy [REDACTED] | Toronto Square, Leeds, LS1 2HJ



Subject: Re: BECCS at Drax – Early / informal review of the Statement of Community Consultation

Good Evening

Thank you for your email and attached draft SOCC.

I can confirm East Riding of Yorkshire Council has no comments to make.

Kind Regards

Matthew Sunman
Principal Development Management Officer - Minerals and Waste


al Planning,

MRTPI

[CAUTION] This email was sent from **outside of your organisation**. Do not click any links, preview or open attachments, or provide any log-in details unless you recognise the sender and know the content is safe.

Good morning all,

As you may be aware, Drax will be preparing a Statement of Community Consultation (SoCC) in advance of our statutory consultation for BECCS at Drax (planned for Autumn this year). This SoCC will outline our approach to consulting the local community. Later this year, we will be formally consulting you on this SoCC (in line with the requirements set out in the Planning Act 2008). In the meantime, we wanted to give you an early informal opportunity to review the current version of the draft SoCC. This will help us to make sure we can tailor our approach based on your local knowledge as efficiently as possible.

We have drafted the attached early SoCC based on lessons learned from the non-statutory consultation held in March. This early draft sets out our approach to the consultation, including the activities we are proposing to provide, the extent of our 'consultation zone' and other logistical aspects. There are some specifics which we are continuing to progress – so elements that are highlighted yellow are to be completed for the later draft of SoCC that we will formally consult you on. We would welcome any comments, suggestions or thoughts you might have at this point. This could be comments around specifics (such as venues, etc.), or around strategic aspects (such as the activities we are proposing).

We would be grateful if you could provide any comments on the early draft SoCC by **end of Thursday 20 May 2021**.

If you any queries, either around the SoCC process or the SoCC itself, we would be happy to discuss these further with you. Please let us know and we can set up a call?

Kind regards

Matt

Matthew Stocks BA (Hons) MSc MRTPI

Associate – Planning Consultancy | [REDACTED] | Toronto Square, Leeds, LS1 2HJ



Good morning all,

Many thanks for your comments on the SoCC for BECCS at Drax. I can confirm that we have updated the SoCC in line with your comments. I have included a response to your comments below, and the updated SoCC is attached. I have attached a clean PDF version which would be the final SoCC, as well as a tracked word version so you can identify where changes have been made.

I also wanted to highlight that unfortunately the Tesco's has now since confirmed we will not be able to use their supermarkets for the manned promotional events. As such we've removed these two lines from the SoCC. I did however want to confirm that we are in contact with Morrisson's in Goole to see if we can use their space. We haven't included this in the SoCC as it is not yet confirmed, however we will aim to replace the events if it all possible.

If you have any queries, please do get in touch.

Kind regards
Olivia

Paragraph	Local Authority comment	Drax response
2.3.8	Q3 2022 – Q1 2023: Examination period. Please add the year as above for clarity and consistency	Year has been added for clarity in the final SoCC.
3.2.2	This approach is welcomed.	Thank you. Your comment is noted.
3.3.3	This paragraph answers a previously raised query of the Authorities the wider consultation zone and the approach is welcomed.	Thank you. Your comment is noted.
3.4.2	The Authorities have previously advised that the Castleford and Pontefract Express should be added to the list of newspaper notices but this has not happened. This request is in line with requests made for a previous DCO application at the Drax Power Station site. The Authorities would welcome the addition or an explanation for its exclusion.	The Castleford and Pontefract Express has been added to the list of newspaper notices in Paragraph 3.4.2 of the final SoCC.
3.4.7	Political briefings; It is suggested that the briefings should include the Executive, Planning Committee and affected ward members at Selby District Council. It is also advised that a further briefing takes place at NYCC offices to include the newly appointed Executive Member for Open for Business. The Authorities look forward to arranging these briefing in the near future.	Thank you for your suggestions. These will be included as part of our briefings strategy and paragraph 3.4.7 of the final SoCC has been updated accordingly.
3.4.11	This is a welcomed addition, covid restrictions permitting.	Thank you. Your comment is noted.
3.6.8	This is a welcomed addition, covid restrictions permitting.	Thank you. Your comment is noted.
3.6.11	The Authorities believe this is a robust approach and it is welcomed.	Thank you. Your comment is noted.
3.6.12	Deposit Points SDC offices remain closed at this time. In the past County Hall has been used as a deposit point for documentation	The libraries have been confirmed as deposit point locations. Thank you for confirming regarding the SDC and NYCC offices who have been removed from the

	with no visitors but, in the same way as SDC offices, is not accepting members of the public at this time. What are the alternatives if those in yellow can't be used?	deposit venues list in 3.6.12 as they are not currently open to the public. The Drax Sports & Social Club has since been added to the list of deposit points.
Local / Community Interest Groups	The Authorities would ask how the list has been compiled.	The list of local community / interest groups has largely been compiled through desktop research as well as previous engagement / consultation on BECCS at Drax as well as Drax Repower. We aim to identify a mix of interest groups, accessibility groups as well as community representatives. This is not an exhaustive list and can be added / updated to as required. This list does not include the prescribed consultees who will be consulted separately under section 42 of the Planning Act 2008.



Olivia Fava-Verde

Principal stakeholder engagement and consultation manager

Hi Olivia

Please see attached the joint response to the SOCC from NYCC and SDC. You will see we are supportive with minor comments. If you have any queries please pick this up with either Jenny or me and we can discuss it further.

Many thanks
Michael

Michael Reynolds
Senior Policy Officer (Infrastructure)

Growth, Planning & Trading Standards | Business & Environmental Services |
North Yorkshire County Council | County Hall | Racecourse Lane |
Northallerton | North Yorkshire | DL7 8AD

C2 - NYCC and Selby DC response to SoCC
September 2021

Drax Bio-Energy and Carbon Capture
Storage

Our Ref: Michael Reynolds
Your Ref: SOCC

Date: 2 September 2021

Business and Environmental Services
East Block
County Hall
Racecourse Lane
Northallerton
DL7 8AD

Tel:

Email:

Dear Sirs

**Drax Bio-Energy and Carbon Capture Storage
Statement of Community Consultation**

Thank you for consulting North Yorkshire County Council (NYCC) and Selby District Council (SDC) on the draft Statement of Community Consultation.

Please accept this letter as a response on behalf of NYCC and SDC (The Authorities).

This draft SOCC relates to the statutory consultation period following on from the non-statutory consultation earlier this year. There are further comments below but overall the Authorities support the approach set out in the consultation document and in particular are pleased to see how the consultation strategy seeks to build upon the results on the non-statutory consultation.

The relevant paragraph and corresponding comments are reproduced in the following table.

Paragraph	Local Authority comment
2.3.8	Q3 2022 – Q1 2023: Examination period Please add the year as above for clarity and consistency
3.2.2	This approach is welcomed.
3.3.3	This paragraph answers a previously raised query of the Authorities concerning the wider consultation zone and the approach is welcomed.
3.4.2	The Authorities have previously advised that the Castleford and Pontefract Express should be added to the list of newspaper notices but this has not happened. This request is in line with requests made for a previous DCO application at the Drax Power Station site. The Authorities would welcome the addition or an explanation for its exclusion.
3.4.7	Political briefings; It is suggested that the briefings should include the Executive, Planning Committee and affected ward members at Selby District Council. It is

	also advised that a further briefing takes place at NYCC offices to include the newly appointed Executive Member for Open for Business. The Authorities look forward to arranging these briefing in the near future.
3.4.11	This is a welcomed addition, covid restrictions permitting.
3.6.8	This is a welcomed addition, covid restrictions permitting.
3.6.11	The Authorities believe this is a robust approach and it is welcomed.
3.6.12	Deposit Points SDC offices remain closed at this time. In the past County Hall has been used as a deposit point for documentation with no visitors but, in the same way as SDC offices, is not accepting members of the public at this time. What are the alternatives if those in yellow can't be used?
Local / Community Interest Groups	The Authorities would ask how the list has been compiled.

Hopefully this is response is of use. Should you have any queries please contact Michael Reynolds on the above contact details to discuss the response further.

Yours faithfully

Michael Reynolds
Senior Policy Officer (Infrastructure)
North Yorkshire County Council

C3 - Statement of Community Consultation



STATEMENT OF COMMUNITY CONSULTATION

Drax Bioenergy with Carbon Capture and Storage

The Planning Act 2008

Document Reference Number: 0.12.1

Applicant: Drax Power Limited

PINS Reference: EN010120



REVISION: 03

DATE: April 2021

DOCUMENT OWNER: WSP UK Ltd

AUTHOR: O. Fava-Verde

APPROVER: L. Peter

PUBLIC

TABLE OF CONTENTS

1. INTRODUCTION.....	1
1.1. Background.....	1
1.2. Policy context.....	1
1.3. Purpose of this SoCC.....	2
2. THE PROPOSED SCHEME	3
2.1. What is BECCS at Drax?	3
2.2. Project boundary	4
2.3. The planning process.....	5
2.4. Environmental Impact Assessment.....	7
3. APPROACH TO CONSULTATION	8
3.1. Statutory requirements for the consultation.....	8
3.2. Objectives and scope of the consultation.....	8
3.3. Who will be consulted?	10
3.4. Consultation promotion	11
3.5. Drax internal networks	13
3.6. Consultation materials and activities.....	13
3.7. Obtaining feedback	16
APPENDIX A: COMMUNITY GROUPS	17

FIGURES

Figure 2.1: BECCS process diagram	4
Figure 2.2: Drax BECCS Site Boundary	5
Figure 3.1: Parishes within a 3km radius of the Proposed Scheme.....	10

1. INTRODUCTION

1.1. BACKGROUND

- 1.1.1. Drax Power Limited (the 'Applicant') is in the process of developing Bioenergy with Carbon Capture and Storage (BECCS) at Drax Power Station in North Yorkshire. BECCS is a technology that has been developed to remove carbon dioxide (CO₂) from the atmosphere. The Applicant is proposing to install BECCS technology on up to two of its existing biomass power generating units at Drax Power Station, helping to permanently remove more CO₂ from the atmosphere than is produced across its operations, making Drax Group carbon negative. This project is known as BECCS at Drax and is also referred to in this document as 'the Proposed Scheme'.
- 1.1.2. As the Proposed Scheme constitutes a Nationally Significant Infrastructure Project (NSIP), the Applicant must make an application under the Planning Act 2008 (as amended) (PA2008) for a permission known as a Development Consent Order (DCO) to construct and operate the Proposed Scheme. The Application will be submitted to the Planning Inspectorate (PINS), who will appoint a single person or panel from PINS to examine the Application and make a recommendation to the Secretary of State (SoS) for Business, Energy and Industrial Strategy (BEIS), who will then make a decision on whether or not to grant development consent.
- 1.1.3. Section 47 of the PA2008 requires that consultation is carried out with people living in the vicinity of the Proposed Scheme before an application is submitted. In line with section 47, the Applicant has prepared this Statement of Community Consultation (SoCC) in connection with the Proposed Scheme.

1.2. POLICY CONTEXT

- 1.2.1. The Government has published National Policy Statements (NPSs) which set out the policy against which the SoS will make decisions on applications for DCOs. Of relevance to BECCS at Drax are the following NPSs:
- Overarching National Policy Statement for Energy (EN-1);
 - 'Renewable Energy Infrastructure (EN-3).
- 1.2.2. Draft revision to the NPSs have now been published and are open to consultation until 29 November 2021, however it is not anticipated that the review will impact on the development of this SoCC.
- 1.2.3. The UK government has a legally binding target to bring all greenhouse gas emissions to net zero by 2050, compared with the previous target of at least 80% reduction from 1990 levels. The Government's Energy White Paper ([Power Our Net Zero Future, December 2020](#)) highlighted key areas for a green industrial revolution and the transition process for reaching the 2050 net zero goal. Carbon capture is considered essential for the UK to reach net zero by 2050 and the Applicant deploying this technology can help develop the industry by deploying a system at

scale which will both counteract emissions from Drax Power Station and help to decarbonise other industries.

- 1.2.4. Drax's biomass units already use biomass sourced from sustainably managed forests to generate electricity. The forests used to create biomass absorb CO₂ while growing. With BECCS at Drax, the CO₂ that is emitted as part of the energy generation from biomass will be captured using carbon capture technology. That CO₂ will then be safely stored offshore in geological storage under the seabed. The process of electricity generation becomes carbon negative, as more carbon has been removed from the atmosphere than has been added.
- 1.2.5. Achieving negative CO₂ emissions is a vital part of the solution to tackling climate change by helping to offset hard to decarbonise industries, whilst the solution also includes decarbonising all sectors of the economy, deploying more renewables, hydrogen and electric vehicles as well as improving energy efficiency and changing the way we live.

1.3. PURPOSE OF THIS SOCC

- 1.3.1. The purpose of this document is to set out how the Applicant will consult the local community, residents and businesses within the area of the Proposed Scheme. The document also provides background to the Proposed Scheme, details where further information can be obtained or viewed, explains how comments on the proposals can be made, and sets out the DCO process. This SoCC includes:
 - The objectives and scope for the consultation;
 - Details of proposed consultation activities, including materials, events and promotion;
 - Details of ways in which consultees will be given the opportunity to submit their feedback;
 - Details of ways in which the Applicant will have regard to consultation feedback.
- 1.3.2. This SoCC also sets out how this consultation will meet the requirements of the PA2008. It has been prepared with reference to guidance on pre-application consultation published by the Government (Planning Act 2008: Guidance on the Pre-Application Process), as well as PINS Advice Notes Two (The role of local authorities in the development consent process) and Three (EIA consultation and notification).
- 1.3.3. In accordance with section 47(2) of the PA2008, the Applicant has consulted with North Yorkshire County Council and Selby District Council (as host authorities under section 43(1) of the PA2008) on this SoCC. The Applicant also informally consulted East Riding of Yorkshire as a neighbouring authority. The local authorities were given 28 days to provide their comments on the draft SoCC.

2. THE PROPOSED SCHEME

2.1. WHAT IS BECCS AT DRAX?

2.1.1. Drax Power Station currently has four biomass generating units, capable of using different biomass fuels to generate renewable electricity. The Applicant is proposing to install carbon capture technology on up to two of these biomass power generating units. This will remove up to 95% of the CO₂ from the gas emitted from those two units. This CO₂ would then be transported and stored safely underground in geological storage under the seabed which will be developed and consented as a separate project. The transportation and storage of the CO₂ is not part of the Proposed Scheme.

2.1.2. The carbon capture technology is made up of:

- A flue gas pre-treatment section which will look to remove pollutants from the gas before the CO₂ is extracted;
- An absorber column to extract the CO₂ from the flue gas, a chemical reaction is started within the absorber column, using an amine solvent;
- An enhanced regeneration column (or re-boiler) where the solvent which contains the CO₂ is re-heated, separating the CO₂ from the solvent;
- A filtration and reclamation system that will remove contaminants from the amine stream, prolonging the life of the solvent (and equipment). This also includes a 'flue gas scrubber' which cleans up the flue gas before entry into the absorber;
- Solvent storage and system make-up to ensure that the amine remains in a good condition and continues to be available for the process;
- Conditioning process for the CO₂ to ensure it meets the correct conditions for transport and storage;
- Compression, dehydration, and oxygen removal so that the CO₂ is ready for transport by pipeline for storage in safe underground deposits; and
- A new Carbon Capture Wastewater Treatment Plant (WWTP) where 'condensate' (a wastewater by-product) is recovered from the process, treated and re-used.

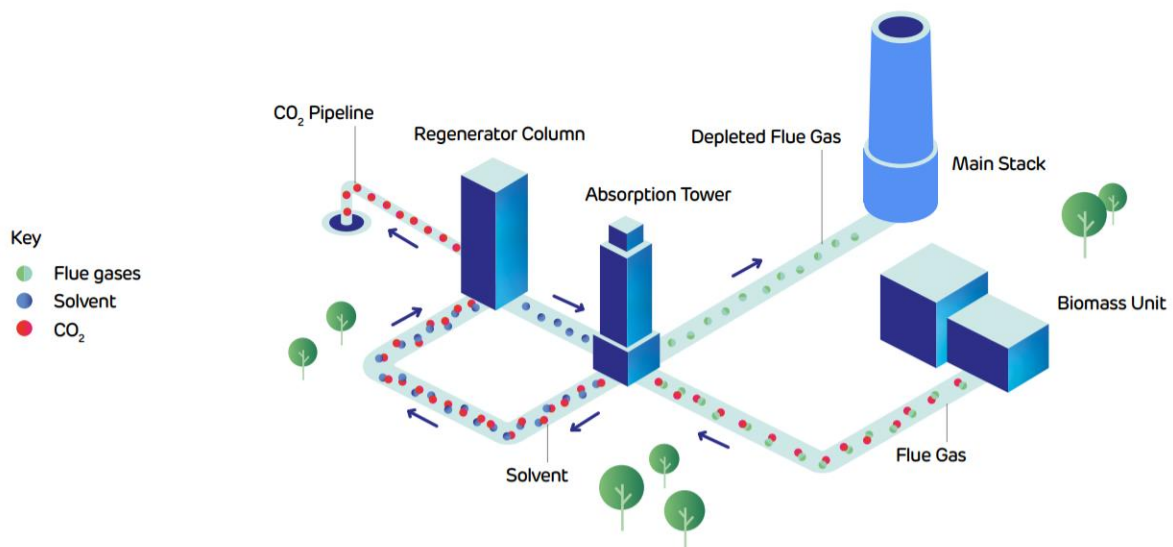


Figure 2.1: BECCS process diagram

- 2.1.3. The CO₂ captured will be transported via a proposed National Grid Ventures pipeline for compression on the East Coast, and storage under the southern North Sea. Transport and storage infrastructure will be consented through separate applications.
- 2.1.4. In developing the Proposed Scheme, the Applicant is working towards the vision of:
- Negative emissions from BECCS are essential for the UK to achieve its legally binding net zero by 2050 target;
 - Providing an avenue for jobs and economic growth across the Humber and North Yorkshire region; and
 - Positioning Drax as a global leader in developing innovative technologies needed in the fight against climate change.

2.2. PROJECT BOUNDARY

- 2.2.1. The draft Order Limits for the Proposed Scheme are shown in Figure 2.2.

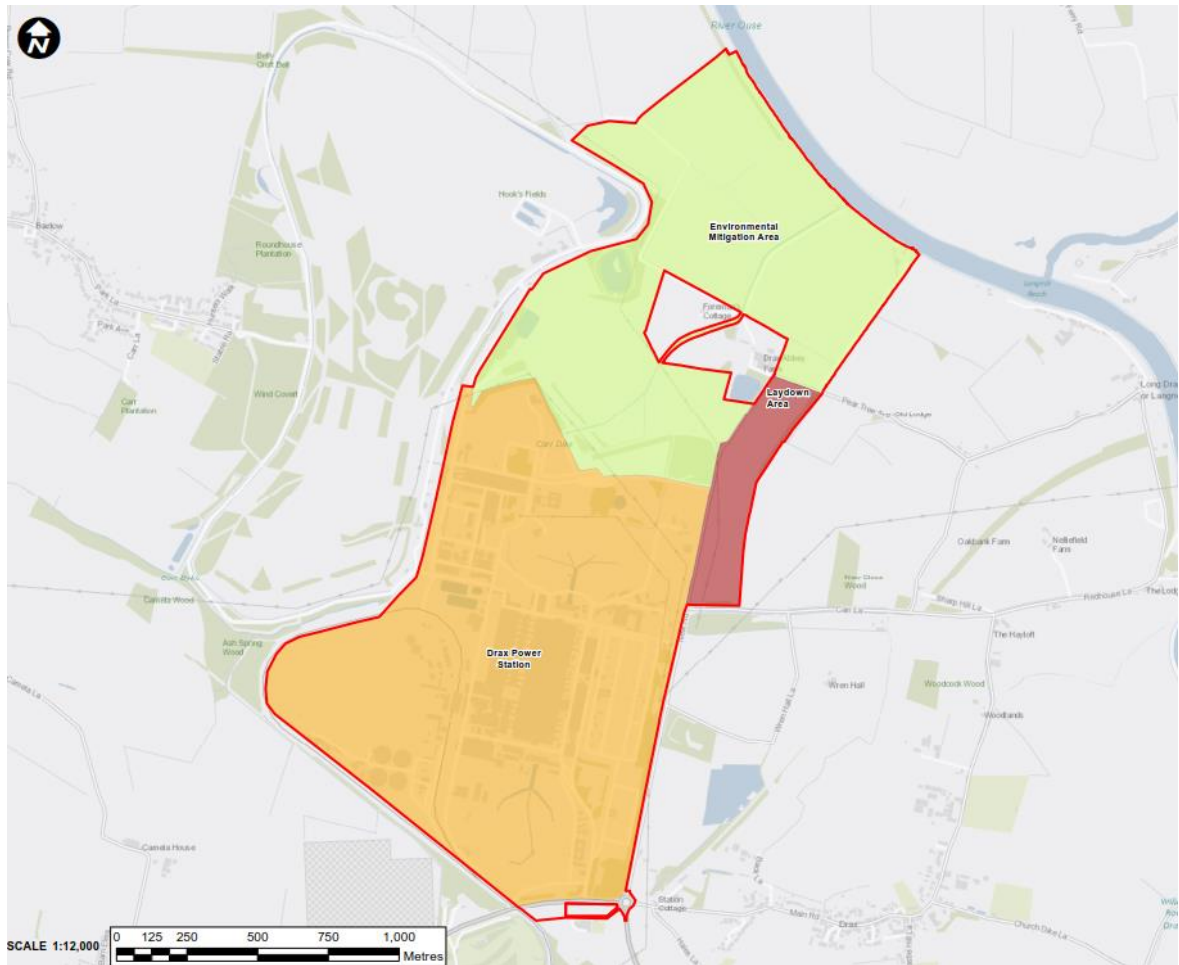


Figure 2.2: Drax BECCS Site Boundary

2.2.2. As well as the BECCS technology components which would be installed within the existing Drax Power Station Site, the boundary includes:

- A construction laydown area which would be used for construction offices, warehouses, workshops, open air storage areas and car parking. This laydown area will be reinstated to its original use following completion of all construction works.
- An environmental mitigation area to the north of Drax Power Station which has been identified as a potential area for environmental mitigation. This is largely agricultural land. The Applicant is not proposing to build any new infrastructure on this land and the area of useful agricultural land will not be affected.

2.3. THE PLANNING PROCESS

2.3.1. In order to obtain development consent for the Proposed Scheme, the Applicant will need to follow the stages set out in the PA2008. These stages are:

PRE-APPLICATION

2.3.2. PINS is informed by the Applicant that it intends to submit an application for a DCO. Before submitting an application, the Applicant is required to carry out consultation on its proposals. The length of time taken to prepare and consult on a project will vary

depending upon its scale and complexity. The Applicant will need to consider all information provided during the consultation process and, as part of the application for a DCO, they will need to provide a consultation report which states how the Applicant has had regard to this feedback in preparing the application for the project and finalising its proposals.

ACCEPTANCE

- 2.3.3. The acceptance stage begins when the Applicant submits the application to PINS. Under Section 55 of the PA2008, there follows a period of up to 28 days (excluding the date of receipt of the application) for PINS, on behalf of the SoS, to decide whether or not the application meets the standards required to be formally accepted for examination.

PRE-EXAMINATION

- 2.3.4. During this stage the SoS will appoint an Examining Authority (ExA) (either a single inspector or a panel made up of inspectors from PINS) to be responsible for examining the application. At this stage, the public are invited to register with PINS and provide a summary of their views of the application in writing. At the pre-examination stage, everyone who has registered and made a relevant representation will be invited to attend a preliminary meeting run and chaired by the ExA. This stage of the process takes approximately three months from the developer's formal notification and publicity of an accepted application.

EXAMINATION

- 2.3.5. The ExA has six months to carry out the examination. During this stage, people who have registered to have their say, are invited to provide more details of their views in writing. Careful consideration is given by the ExA to all the important and relevant matters, including the representations of all interested parties, any evidence submitted, and answers provided to questions set out in writing and explained at oral hearings.

DECISION

- 2.3.6. The ExA must prepare a report on the application to the relevant SoS, including a recommendation, within three months of the end of the six month examination period. The SoS then has a further three months to make the decision on whether to grant or refuse development consent.

POST DECISION

- 2.3.7. Once a decision has been issued by the SoS, there is a six week period in which the decision may be challenged in the High Court. This process of legal challenge is known as judicial review.
- 2.3.8. The approximate timeline for the Proposed Scheme and how it will progress through the different DCO application stages is set out below.
- Q1 / Q2 / Q3 2021: Environmental scoping complete, non-statutory consultation takes place, liaison with local councils and other statutory consultees.

- Q4 2021: Statutory period of consultation, including consultation on the Preliminary Environmental Impact Report (PEIR), and publication of the SoCC
- Q2 2022: Submission of the DCO application
- Q2 / Q3 2022: Pre-examination period and notice of preliminary meeting
- Q3 2022 – Q1 2023: Examination period
- Q1 – Q3 2023: Recommendation and decision-making period
- Q2 2024: Commencement of construction

2.4. ENVIRONMENTAL IMPACT ASSESSMENT

- 2.4.1. The Proposed Scheme is an Environmental Impact Assessment (EIA) development as defined by the Infrastructure Planning (Environmental Impact Assessment) Regulations 2017 (EIA Regulations). An Environmental Statement (ES) will be submitted as part of the Application and, in accordance with regulation 12, the Applicant will consult on preliminary environmental information, in the form of a PEIR, which will form part of the consultation documents and will be available for the community and stakeholders to view during the consultation process.
- 2.4.2. In advance of commencing the EIA, the Applicant has submitted a request for a scoping opinion to PINS in January 2021 (document reference 0.1), to seek an opinion from the SoS on the scope and level of detail of the information to be included in the ES to be submitted with the Application. The SoS has adopted a scoping opinion in February 2021. This can be viewed on the PINS website, alongside the Applicant's scoping report.
- 2.4.3. The PEIR will present environmental information that has been collected to date to allow consultees to understand the likely significant environmental effects of the Proposed Scheme, and will indicate the mitigation measures that the Applicant expects to implement in order to reduce and mitigate any residual impacts.
- 2.4.4. All comments received during the consultation will be considered and will inform, where practicable and appropriate, any further refinements to the Proposed Scheme and the Applicant's approach to environmental mitigation.

3. APPROACH TO CONSULTATION

3.1. STATUTORY REQUIREMENTS FOR THE CONSULTATION

- 3.1.1. In accordance with section 47 of the PA2008, the Applicant will consult people living in the vicinity of the Proposed Scheme, including those affected by the construction and operation of the Proposed Scheme.
- 3.1.2. Section 47 of the PA2008 states that *'the applicant must prepare a statement setting out how the applicant proposes to consult, about the proposed application, people living in the vicinity of the land'*. The Applicant must then carry out consultation in accordance with the proposals set out in the statement.
- 3.1.3. As well as meeting requirements for consultation set out in the PA2008, the consultation process is designed to provide the opportunity for people of all ages, backgrounds and life circumstances to get involved, including traditionally 'hard to reach' or excluded demographic groups.

3.2. OBJECTIVES AND SCOPE OF THE CONSULTATION

- 3.2.1. The consultation will be held over a 6-week period from 01 November to 12 December 2021. The Applicant will be mindful of all COVID-19 restrictions and guidance in place at time of the consultation. At time of developing this SoCC, it is anticipated that there may remain some social distancing requirements for any public events. The consultation will therefore be held primarily online, via a dedicated website, as well as digital events for people to participate in. This will be combined with some in-person events / non-digital opportunities to view and comment on the Proposed Scheme, subject to COVID-19 restrictions. Any face-to-face events will be held in line with Government guidance on social distancing requirements.
- 3.2.2. The approach to this consultation is based on lessons learned from the non-statutory consultation held in March 2021. These learnings include:
 - Digital consultations enable large numbers of visitors to the project website for information, and to encourage participation; however there remains the need to provide non-digital formats to ensure accessibility for all groups. A combination of digital and in-person consultation activities should therefore maximise participation from different audiences.
 - At the non-statutory consultation, there were significant numbers of visitors to the project website (966 unique web visitors), however comparatively low numbers of responses to the consultation (36 responses in total). Promotion for the statutory consultation will therefore focus on encouraging wider responses. This will include wider promotion with stakeholders and community representatives in advance of the consultation (see Section 3.4 below), as well as consideration of the website format and how this can further encourage feedback.
 - Some of the main queries or concerns arising from the non-statutory consultation were focused on safety of CO₂ capture, the BECCS process, as well as

environmental issues, including air quality and noise pollution. The statutory consultation materials will ensure to cover these points in more detail to help alleviate potential concerns and raise awareness of BECCS at Drax.

3.2.3. The core objectives of the consultation will be to provide relevant and engaging information to communities that will help to:

- Explain and raise awareness around BECCS and the role that the Applicant can play in helping to tackle climate change, whilst supporting the local community;
- Generate interest and engagement in the Proposed Scheme, and generate opportunities for people to have their say on the Proposed Scheme;
- Clearly explain the technicalities behind the Proposed Scheme, so that communities can make informed comments on it; and
- Ensure that all communities, individuals and interested parties have equal opportunity to learn about the Proposed Scheme and provide their views.

3.2.4. The scope of the consultation will be to:

- Introduce the Proposed Scheme to stakeholders and communities, including scene-setting information on:
 - What the Proposed Scheme involves;
 - The importance of BECCS technology in meeting net zero goals;
 - The DCO process.
- Provide information on what the Proposed Scheme will look like, including information on:
 - Types of technologies used (non-technical);
 - Construction and environmental components of the Proposed Scheme.
- Environmental impacts and mitigation options, including construction impacts. This information will largely be derived from the PEIR.
- Information of interest to the local communities (including how the Proposed Scheme can benefit them), such as:
 - Skills and employment opportunities;
 - Safety of BECCS operations and CO₂ capture / transport / storage.

3.2.5. The consultation will be open to comments on all aspects of the Proposed Scheme. Specific areas of feedback which will be sought will be regarding:

- The Applicant's ambitions for achieving negative emissions from Drax Power Station;
- The design of the Proposed Scheme;
- Potential environmental impacts and the proposed mitigation measures;
- Potential construction impacts and the proposed management of these;
- Areas of community interest such as local benefits, jobs, etc.

3.3. WHO WILL BE CONSULTED?

3.3.1. It will be critical to consult with local community groups within the vicinity of the Proposed Scheme, including local residents, businesses and other community interest groups. Other groups that may be affected include those that are harder-to-reach or seldom-heard groups which require particular focus and proactive engagement during the consultation process.

CONSULTATION ZONE

3.3.2. Figure 3.1 below highlights the area that constitutes the local community around Drax Power Station, and which we refer to as the 'consultation zone'. This is based on the parishes that sit within 3km of the Proposed Scheme. The Proposed Scheme sits directly within Long Drax, Drax, Barlow, Camblesforth Parish Councils. Other Parish Councils within 3km of the Proposed Scheme are: Carlton, Rawcliffe, Newland, Barmby on the Marsh, Hemingbrough, Cliffe and Selby Parish Councils.

3.3.3. This consultation zone will be the basis for the distribution of promotional materials (notably the promotional postcards, which are discussed in more detail in Section 3.4). However, events and other promotional activities (such as social and traditional media) will not be limited to this zone.

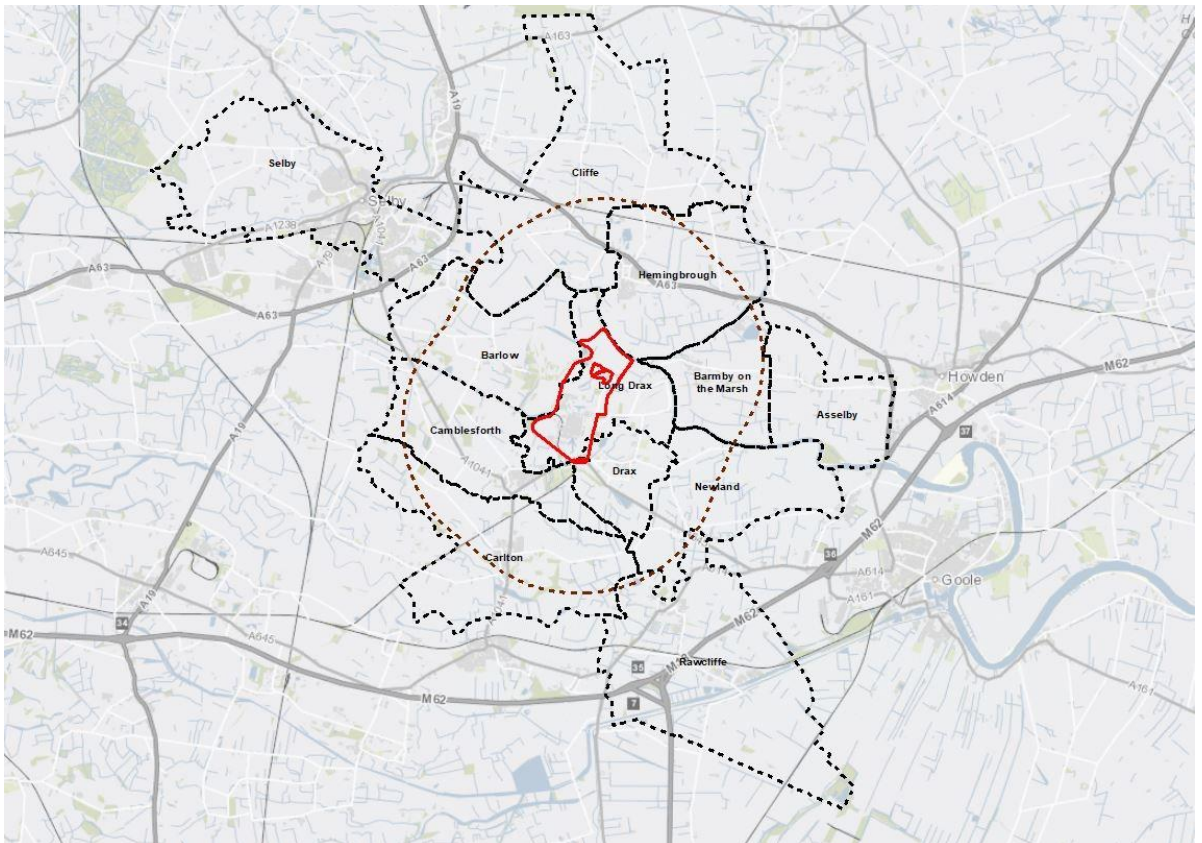


Figure 3.1: Parishes within a 3km radius of the Proposed Scheme

COMMUNITY INTEREST AND HARD TO REACH GROUPS

- 3.3.4. The Applicant will also consult with local community groups, community representatives and wider interest groups who will have an interest in the Proposed Scheme.
- 3.3.5. It will be particularly important to provide opportunities for participation in the consultation for all people with a potential interest in the Proposed Scheme. This includes traditionally 'hard to reach' or excluded demographic groups who may require special consideration when planning consultation activities.
- 3.3.6. In the vicinity of the Drax Power Station Site, hard to reach groups of particular relevance are:
- 3.3.7. Time-poor people – 77% of Camblesforth & Carlton ward residents are in employment and 74% are in full-time employment, according to the 2011 Census. It will be important to provide opportunities to participate in the consultation both inside and outside of normal working hours, as well as providing a combination of online and in-person opportunities (where possible, having regard to COVID-19 restrictions) for people to participate at their convenience.
- 3.3.8. Older people and people with disabilities – Ensuring that digital platforms and materials are accessible to all audiences. If COVID-19 restrictions allow, any in-person event (such as public exhibitions or deposit points) venues should be close to local residents, with adequate means of access and suitable opening hours. Everyone that receives postal publicity will be invited to request the consultation information in alternative formats, including large text.
- 3.3.9. People whose first language is not English – Publicity for the consultation will invite recipients to request consultation information and the feedback questionnaire in other languages or formats.
- 3.3.10. A full list of the community groups to be consulted can be found in Appendix A. These groups have been identified through desktop research, in liaison with local authorities, and from feedback received as part of the non-statutory consultation.

3.4. CONSULTATION PROMOTION

- 3.4.1. The Applicant will publicise the consultation widely to maximise participation in the events and feedback received. The PA2008 states that the applicant must:
- *'Make the statement available for inspection by the public in a way that is reasonably convenient for people living in the vicinity of the land'*
 - *'Publish in a newspaper circulating in the vicinity of the land, a notice stating where and when the statement can be inspected, and'*
 - *'Publish the statement in such manner as may be prescribed.'*

NEWSPAPER ADVERTS

- 3.4.2. In accordance with the requirements, the Applicant will publicise a section 47 notice summarising the contents of this SoCC, in the following local newspapers:
- Selby Times;
 - Goole Times;
 - Castleford and Pontefract Express;
 - Yorkshire Post.
- 3.4.3. The section 47 notice will include details on how people can engage and participate in the consultation (including details of online / in-person events), the URL of the project website and contact details for the Applicant in the event of questions or queries.
- 3.4.4. The advertisements will be published before the start of the statutory period of public consultation.
- 3.4.5. In addition to the requirements for publicising the section 47 notice in local newspapers, the Applicant will undertake further promotional activities to ensure that the consultation reaches as many people as possible. These activities will include distribution of publicity materials, social media, public notes and emails / letters to community groups identified. These activities are described below.

DISTRIBUTION OF PROJECT POSTCARD

- 3.4.6. An A5 information postcard will be distributed to every residential and business address within the proposed consultation zone (Figure 3.1), containing:
- A brief description of what is proposed;
 - Ways in which recipients can get involved in the consultation, including by viewing the Proposed Scheme information and submitting feedback online;
 - The URL of the project website;
 - Contact details for the project team;
 - Dates and times of events (online and in-person, where possible) and how to join them.

POLITICAL BRIEFINGS

- 3.4.7. Prior to the launch of the consultation in November 2021, the Applicant will hold briefings with elected members to ensure that they are aware of the Proposed Scheme, to outline the purpose of the consultation (and how people can get involved), and to encourage sharing of the consultation details throughout their networks in order to maximise engagement by the community in the consultation. In line with local authority suggestions, this will include invitations to the Executive, Planning Committee and affected ward members at Selby District Council, and the appointed Executive Member for Open for Business at North Yorkshire County Council. Briefings will be offered at both Council offices as well as online. In addition,

site tours of the Proposed Scheme area will also be offered to a selection of stakeholders.

COMMUNITY GROUPS UPDATE

- 3.4.8. On launch of the consultation, an email / letter will be issued to all community groups outlined in Appendix A to introduce them to the Proposed Scheme, the consultation and how they can provide their comments.
- 3.4.9. This will include communications with groups who have established networks within the vicinity of the Proposed Scheme, and encouraging them to publicise the consultation to those networks.

SOCIAL MEDIA

- 3.4.10. Existing Drax social media platforms (Twitter and Facebook) will be used to generate interest and participation in the consultation. Communications will provide bitesize factual information on the Proposed Scheme, making clear how people can participate in the consultation.

MANNED PROMOTION POP-UP EVENTS

- 3.4.11. The Applicant will hold manned promotional events in local venues with high footfall, subject to COVID-19 restrictions, to raise awareness of the Proposed Scheme at a glance and to generate interest in the consultation. Members of the project team will be on hand at these events with promotional materials, and to publicise the different consultation events (online and in-person) which people can attend.
- 3.4.12. Venues will include:

Date	Time	Location
Thursday 4 November 2021	12.00pm – 5.30pm	Morrisons Selby Market Cross, Selby YO8 4YR
Thursday 11 November 2021	12.00pm – 5.30pm	Morrisons Selby Market Cross, Selby YO8 4YR

3.5. DRAX INTERNAL NETWORKS

- 3.5.1. Drax will use internal communication channels to inform their workforce about the consultation, how to get involved, and how to promote the consultation to their own networks.

3.6. CONSULTATION MATERIALS AND ACTIVITIES

WEBSITE

- 3.6.1. The main portal for the consultation will be the established website: [REDACTED]
[REDACTED] This website will be the initial port-of-call for most community members and

other interested parties. It will host a suite of information to cater to different interests and levels of detail.

3.6.2. The website will also be the main platform for people to provide their feedback, and to participate in the online events.

BROCHURE, FACTSHEETS AND FEEDBACK FORM

3.6.3. A suite of consultation materials will be available for people to view and inform themselves around the Proposed Scheme. These materials will include:

- A brochure outlining background information on the Proposed Scheme, details of what is proposed and ways to submit feedback;
- Exhibition boards which provide further information on specific elements of the Proposed Scheme, including information on BECCS technology, the planning process and construction considerations.
- The PEIR;
- A non-technical summary of the information included in the PEIR;
- This SoCC;
- A feedback questionnaire.

3.6.4. All materials will be available online to view and download. Hard copies and alternative formats of the materials will also be made available to people upon request. Details on how to request hard copies or alternative formats will be made clear on the website and on the publicity postcard which will be issued to all addresses within the consultation zone.

3.6.5. Copies of the brochure and non-technical summary of the PEIR will be provided free of charge. Due to the size of the PEIR as a detailed technical document, a charge will incur for the printing and delivery of the PEIR upon request. (Cost to be confirmed once PEIR has been finalised).

ONLINE EVENTS

3.6.6. Three online events will be held over the course of the consultation period. These will be held via live-chat, providing communities an opportunity to hear more about the Proposed Scheme and discuss their views directly with members of the project team on the website one-to-one chat function.

3.6.7. The online events will be held on:

- Thursday 11 November 2021 (10am - 2pm)
- Thursday 18 November 2021 (4pm - 8pm)
- Wednesday 24 November 2021 (2pm - 6pm)

IN-PERSON EVENTS

3.6.8. Depending on COVID-19 restrictions still being in place at time of consultation, three in-person exhibition events will be held. The exhibitions will include materials for

members of the public to view information on the Proposed Scheme. Members of the project team would be available to answer any questions.

3.6.9. The events will be held on:

Tuesday 23 November 2021	Drax Sport and Social Club Main Rd, Drax, Selby YO8 8PJ	12.00 – 18.00
Saturday 27 November 2021	Junction Goole Paradise Place, Goole DN14 5DL	10.00 – 16.00
Wednesday 1 December 2021	Selby Town Hall York St, Selby YO8 4AJ	13.30 – 19.30

3.6.10. All appropriate COVID-19 precautions will be taken and relevant Government guidance at the time of consultation will be followed.

3.6.11. In the event of needing to cancel the in-person events due to COVID-19 restrictions or other unforeseen circumstances, we would provide three further online events in lieu of the exhibition events. These changes would be publicised using social media, community group updates and an updated postcard to be distributed across the consultation zone.

DEPOSIT POINTS

3.6.12. Throughout the consultation period, deposit points will be available where consultation materials will be available for inspection. This will be subject to COVID-19 restrictions at time of consultation.

- Selby Library (52 Micklegate, Selby YO8 4EQ)
- Snaith Library (27 Market Pl, Snaith, Goole DN14 9HE)
- Goole Library (Carlisle Street, Goole DN14 5DS)
- East Riding of Yorkshire Council (Beverley Customer Service Centre, 7 Cross St, Beverley HU17 6TB)
- Drax Sports Club (Main Rd, Drax, Selby YO8 8PJ)

3.6.13. In the event of needing to cancel the use of deposit points due to COVID-19 restrictions, materials will remain available online. Hard copies of the materials will also be made available upon request, regardless of the COVID-19 situation. Details on how to request hard copies will be made clear on the postcard that is distributed across the consultation zone.

3.7. OBTAINING FEEDBACK

HOW PEOPLE CAN RESPOND TO THE CONSULTATION

- 3.7.1. An online feedback form will be available for people to provide their comments and views on the Proposed Scheme. This will be the main tool for capturing consultation feedback. Alternatively, people will be able to provide feedback by email or by mail using a Drax FREEPOST address.
- 3.7.2. The deadline for providing consultation feedback will be 11.59pm on 12 December 2021.

MANAGING CONSULTATION DATA

- 3.7.3. All feedback received as part of the consultation will be securely stored in line with the Data Protection Act 2018 the General Data Protection Regulations. The data will only be used to help understand views regarding the Proposed Scheme. The data will not be used for any other purposes. The data will be collated and analysed to help in the reporting of consultation feedback. The Applicant and project team do not, and will not, sell personal information.

REPORTING

- 3.7.4. Responses to the consultation will be collated and analysed. All responses received will be carefully considered and will feed into the developing the Proposed Scheme where appropriate. This feedback will be analysed alongside any and all responses received as part of the consultation activities held in lines with sections 42 and 48 of the PA2008.
- 3.7.5. An explanation of how regard has been had to comments received, and where practicable, how they have shaped and influenced the Proposed Scheme will be reported in a Consultation Report which will accompany the Application as required by section 37(3)(c) of the PA2008.
- 3.7.6. The Consultation Report will include a summary of the consultation process undertaken in accordance with this document, the feedback received and how it has influenced the Proposed Scheme.
- 3.7.7. PINS will decide whether the Application meets the required standards to proceed to examination, and will determine whether the statutory consultation process has been adequate. As part of this process, local authorities will be invited to comment on the adequacy of the consultation.
- 3.7.8. The Applicant's intention is to submit the Application in Q2 2022.

APPENDIX A: COMMUNITY GROUPS

Community representatives		
Organisation	Group	Contact (Role)
Long Drax Parish Council	Parish Council	Mrs Michelle Thorpe (Clerk)
Drax Parish Council	Parish Council	Mr RW Farman (Clerk)
Barlow Parish Council	Parish Council	Miss Rosie Dean (Clerk)
Barmby on the Marsh Parish Council	Parish Council	Mr Ian Sherriff (Acting Clerk)
Camblesforth Parish Council	Parish Council	Andrew Crabbe (Clerk)
Carlton Civil Parish Council	Parish Council	C J Peat (Clerk)
Newland Civil Parish Council	Parish Council	Stephen Greenwood (Chair)
Hemingbrough Parish Council	Parish Council	Mrs Julie Leighton-Eshelby (Clerk)
Barmby on the Marsh Civil Parish Council	Parish Council	Emily Sheriff (Clerk)
Cliffe Parish Council	Parish Council	Mrs Julie Eshelby (Clerk)
Rawcliffe Civil Parish Council	Parish Council	Vicky Whiteley (Clerk)
Selby Town Council	Parish Council	Gill Bell (Town Clerk)
North & South Cliffe Parish Council	Parish Council	Catherine Simpson (Clerk)
North Yorkshire County Council	County Councillor	Cllr Karl Arthur (County Councillor - Selby Barlby Division)
North Yorkshire County Council	County Councillor	Cllr Stephanie Duckett (County Councillor - Selby Barlby Division)

Community representatives		
Organisation	Group	Contact (Role)
North Yorkshire County Council	County Councillor	Cllr Clifford Lunn (County Councillor - Selby Brayton Division)
North Yorkshire County Council	County Councillor	Cllr Mike Jordan (County Councillor - South Selby Division)
Selby District Council	Local councillor	Cllr Mike Jordan (Councillor - Cablesforth and Carlton)
Selby District Council	Local councillor	Cllr Charles Richardson (Councillor - Cablesforth and Carlton)
Selby District Council	Local councillor	Cllr Mark Crane (Councillor – Brayton)
Selby District Council	Local councillor	Cllr Ian John Chilvers (Councillor – Brayton)
Selby District Council	Local councillor	Cllr Karl Arthur (Councillor – Derwent)
Selby District Council	Local councillor	Cllr Mark Topping (Councillor – Derwent)
East Riding of Yorkshire Council	Local councillor	Cllr Charlie Bayram (Councillor – Howden)
UK Parliament	Member of Parliament	MP Nigel Adams (MP - Selby and Ainsty)
UK Parliament	Member of Parliament	MP David Davis (MP - Haltemprice and Howden)

Local / community interest groups	
Organisation	Interest
RSPB/BTO	Environmental Interest Group
Yorkshire Wildlife Trust	Environmental Interest Group
North Yorkshire and York Local Nature Partnership	Environmental Interest Group
Yorkshire Community Woodland Society	Environmental Interest Group

Local / community interest groups	
Organisation	Interest
Friends of the Earth Selby	Environmental Interest Group
Zero Carbon Yorkshire	Environmental Interest Group
Centre for Climate Change Economics and Policy	Environmental Interest Group
Yorkshire Farming and Wildlife Partnership	Environmental Interest Group
Yorkshire Farming and Wildlife Advisory Group	Environmental Interest Group
Yorkshire Dales River Trust	Environmental Interest Group
East and North Yorkshire Waterways Partnership	Environmental Interest Group
The Conservation Volunteers	Community groups
North Yorkshire Rotters	Community groups
Age UK North Yorkshire & Darlington	Community groups
Selby and District Carers Centre	Community groups
Selby District Association of Voluntary Services	Community groups
Citizens Advice Bureau	Community groups
Ramblers Yorkshire Group	Community groups
York Flying School Selby	Community groups
Sherburn Aero Club	Community groups
The Gardens Trust	Community groups
Follifoot Park Disabled Riding Group	Community groups
Scarborough Disabled Swimming Group	Community groups
Wakefield Rifle And Pistol Club	Community groups
We Are Theatre	Community groups
Wetwheels Yorkshire	Community groups
Yorkshire & Cleveland RDA	Community groups

Local / community interest groups	
Organisation	Interest
The Yorkshire Companions (Anglo-Saxon History Group)	Community groups
The Wilberforce Trust - Club Wilber	Community groups
RSBC (Royal Society for Blind Children) Families First Service	Community groups
Rhyming Multisensory Stories - Storytelling Through the Senses	Community groups
Ye Fraternitie of Olde Selebians	Community groups
Selby Civic Society	Community groups

C4 - Statement of Community Consultation
published on project website

Consultation documents

-  [Consultation brochure](#)
-  [Statement of Community Consultation \(SoCC\)](#)
-  [Site location plan](#)
-  [Consultation exhibition boards](#)
-  [Printable consultation feedback form](#)
-  [Preliminary Environmental Information Report \(PEIR\) – Volume 1](#)
-  [Preliminary Environmental Information Report \(PEIR\) – Volume 2 – Appendices](#)
-  [Preliminary Environmental Information Report \(PEIR\) – Volume 3 – Non-Technical Summary \(NTS\)](#)

For further information, please visit the project's page on the Planning Inspectorate website by clicking [here](#).